

# HOSPITALITY PORTFOLIO



# ABOUT

Design **TWG** is a group of passionate designers and architects who are invested in giving value to social and cultural aspirations in hospitality projects, whether they are for startup restaurants, established food industry icons or hotel brand. As a result, we evolved from a small design practice to an institution where clients expect not just good design with solid fundamentals of aesthetics, budgets and schedules but also a partner to see them through the complex process of turning their vision into reality. We apply a boutique approach to all our work, which transform unique brand constraints into design context from where we produce amazing spaces.

## CAPABILITIES

- Hotels
- Event Centers
- Restaurants and Bars
- Refurbishing Projects
- Performance Improvement Plan
- Redesigning and Rebranding
- 360° Consultancy Services
- Procurement

# MEET OUR TEAM



**HEMEN MODI**  
FOUNDER & PRINCIPAL DESIGNER

Hemen Modi's versatile experience in Design, as well as the Construction industry, has defined the character of TWG, offering highly rationalistic solutions for space design and project management. He is the member of Interior Designers of Canada (IDC) and Association of Interior Designers of Ontario (ARIDO). Work span: design, strategy, execution and management. Past experience with core design firms Elephant Design and Nimlok, India and Taylor, Canada; a background in construction industry. Education from School of Interior Design, CEPT University, India He is the man behind 'Together We Grow', the principle that lays the foundation of TWG, an Award Winning Design Firm . With an Instinctive eye for Aesthetics and detail, & Hemen has built a reputation as a creative designer and a design strategist over two decades of his design practice in Toronto. His flair for innovation, along with a subversive creative appeal, has won him a following among his customers and fellow designers alike. With an undaunted belief in his mantra, 'Design for the real world with Substance', Hemen passionately carries the TWG baton forward.

# MEET OUR TEAM



**SHANTANU BISWAS**  
CREATIVE DESIGN LEAD



**RISHMA PARIKH**  
OPERATIONS & BUSINESS HEAD



**ANJU PANDYA**  
BUSINESS MANAGER

# PROJECT EXPERIENCE





# QUALITY INN

ORILLIA, ON

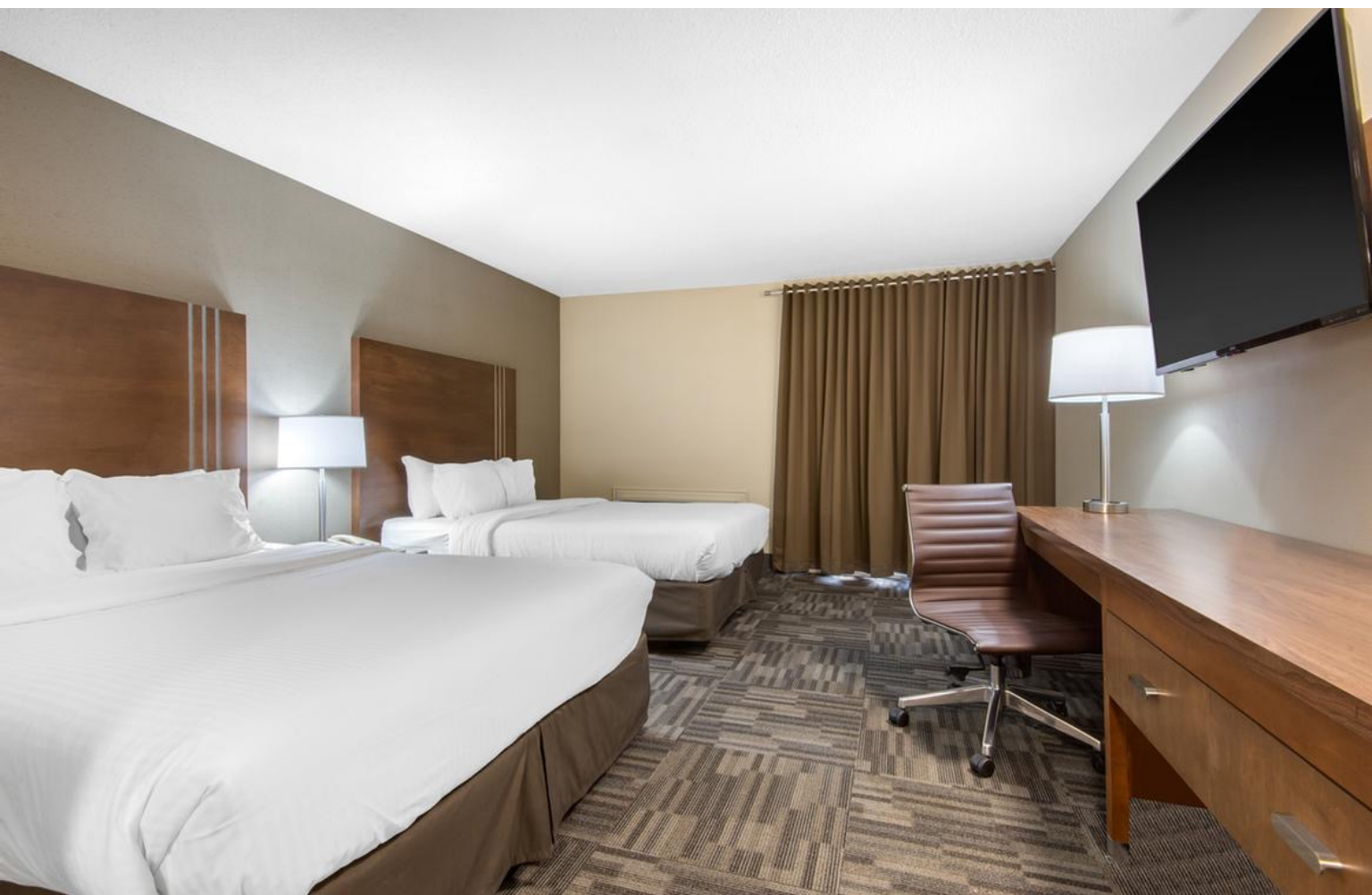
Refurbishing the public areas in the hotel space to give them a fresh uplifting look. These include the hotel entrance lobby, banquet halls, arcade area, and restaurant.

Design TWG, with its expertise in hospitality interior design, was the perfect partner for this hotel project where stated elegance went hand in hand with comfort. The designers drew inspiration from nature to establish a connection between interior spaces and the outdoors. The result was a modern clean look with a cosy comfortable feel. This was done with a peaceful cooler colour palette complemented with ample use of dark wooden components. Motifs emulating organic forms of nature are integrated throughout the interior design.

The hotel provides a lot of amenities for its guests with a pool, sauna and fitness centre all of which were designed by us. The banquet hall is sized to host small to medium-sized conferences.







QUALITY INN ORILLIA  
ORILLIA, ON



# PARK INN BY RADISSON

ORILLIA, ON

The design brief was to primarily create a space that would reflect the policies of Park Inn, a brand committed to providing a cohesive hospitality experience.

Park Inn has a uniform colour scheme and pattern across all their hotel décor. Bold accent colours are a part of the brand. The specification had to be integrated into this hotel design as well.

Design TWG was committed to respecting the brand ethos of this hospitality giant. Every element of the hotel was designed keeping in mind the colour palette and the look.

This hotel is located in a well immersed and populated plaza in Brampton which also houses the Grand Empire Banquet Hall. The proximity to this banquet hall is a big advantage for the hotel guests.

A minimalist interior design matched all the requirements of the brand. This approach enabled the use of a neutral palette and wooden finishes to accent the bold colours of the brand. This created an inviting and comfortable atmosphere as soon as the guests set foot in the hotel lobby.







Radisson®

PARK INN BY RADISSON  
BRAMPTON, ON

DESIGN  
**W6**  
TOGETHER WE GROW



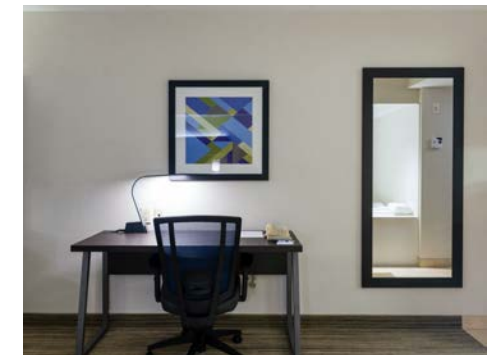
# HOLIDAY INN EXPRESS

BRAMPTON, ON

This express hotel is in an ideal location on the corner of Airport Road and Queen Street. Close to multiple major highways including 410, 407, and 401 and a 15 min drive from Toronto's International Airport, this location is great for all visitors.

Design TWG implemented the brand's guidelines for a modern space that was suitable for the clientele by creating a contemporary design. This gave the entire hotel space a smart look while maintaining a comfortable and modern environment.

A balanced colour palette of warm beige and brown creates a welcoming atmosphere at the entrance and in the lobby area. This colour scheme is juxtaposed with geometric patterns of the fabric elevating the contemporary feel of the space. Green and blue accent chairs implement the brand colours throughout the hotel maintaining the smart contemporary look. The Holiday Inn hotel also includes amenities such as an indoor pool and a health and fitness centre.







HOLIDAY INN EXPRESS  
Brampton, ON





# EST HOTEL

Etobicoke, ON

Est is a boutique hotel situated in Rexdale area of Toronto beside Woodbine race track. This hotel offers modern facilities with luxury and individuality. The design challenge was to seamlessly connect dense urban fabric with the public spaces.

Number of Guestrooms: 98 guests rooms and suites

- The feature element in the lobby is the binding design element.
- Full property improvement including exterior finishes, custom FF & E and incorporating stringent standards was taken up by designTWG.









# NORTHUMBERLAND HEIGHTS

Coburg, ON

The inspiration of this project sparked from ancient practices from all over the world with the five elements.

These include earth, water, air fire, and ether and represent the basis of all creation. The human body is born from these elements and upon death is reduced back to these same five elements. All of the elements around us are the same ones inside all of us.

The vision for this project comes from the aspiration of being the best wellness resort in the GTA which uses ancient techniques to connect to the mind, body, and soul.









# BEST WESTERN PLUS, TORONTO AIRPORT

Etobicoke, ON

This airport location hotel is a Park & Stay venue, central to most of the tourist attractions of Toronto. Catering to both business and leisure travelers, the design mandate was to have two different schemes for general rooms and executive floors. To design 164 guest rooms and suites of several different prototypes was a logistical challenge in itself.

Number of Guestrooms: 164 rooms and suites

## Elements of Design

- Vibrant red accentuated warm greys and cherry wood in the general rooms and suites inspired by mid-century modern design and colors.
- The luxurious feel in the executive rooms and suites was brought about by a combination of upholstered head board and clean sharp lines.
- 6 floors were divided into executive and premium categories and 2 different room schemes were implemented in the hotel.







BEST WESTERN PLUS  
TORONTO AIRPORT  
ETOBICOKE, ON



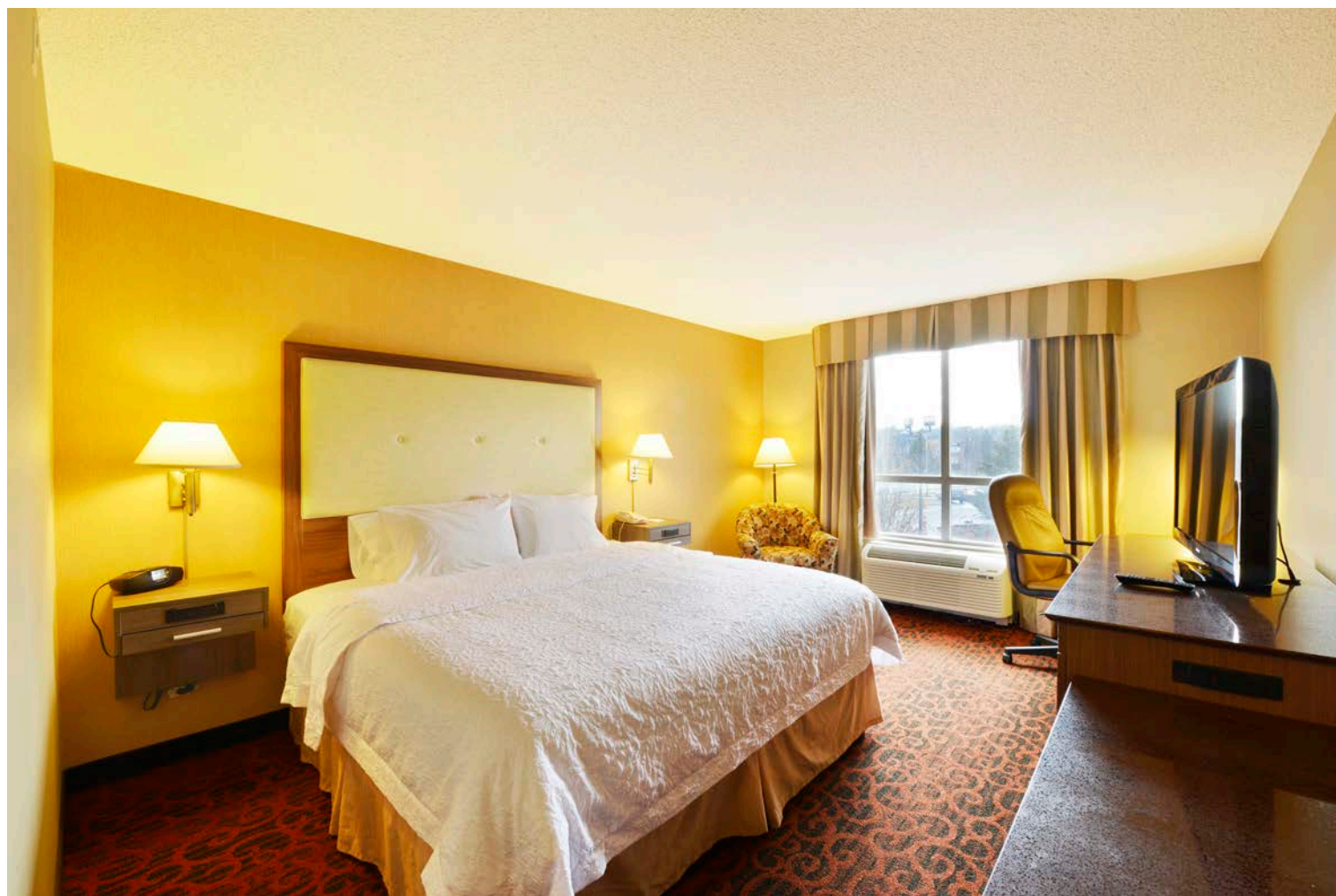




HAMPTON INN  
Mississauga, ON







HAMPTON INN  
Mississauga, ON







HOLIDAY INN EXPRESS  
BARRIE, ON







# HOLIDAY INN EXPRESS

BARRIE, ON



# ABBEY LAWN MANOR

PICKERING, ON

Abbey Lawn Manor is a retirement home, made to help senior citizens transition into a facility with like minded and peace of mind for the people. Design TWG wanted to bring together a design which was comfortable, neutral and give a sense of belongingness to the community.

Number of Rooms: 57 beds as per availability

## Elements of Design

- Warm neutrals used to bring a warmth to the space.
- Large dinning area for all the community to hang out together
- Bright warm lights all round the space to brighten up and make them feel positive.
- The rooms are designed to accommodate all necessary requirements for assisted living.







THANK YOU

